



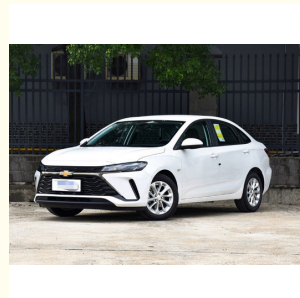
Gasoline Chevrolet 5 Seater Car Minibus Vehicle 4x2 Two Wheel Drive

Our Product Introduction

for more products please visit us on vehicle-automobile.com

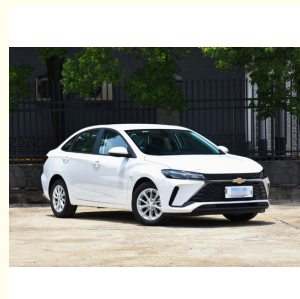
Basic Information

- Place of Origin: China 1 vehicle 1000 vehicle
- Brand Name: Chevrolet
- Model Number: Chevrolet gasoline 5-passenger two-wheel drive automatic passenger car 4x2
- Minimum Order Quantity: 1 vehicle
- Price: \$12,000-\$15,000Dollar
- Packaging Details: Complete vehicle
- Delivery Time: 5-8 work days
- Payment Terms: T/T, T/T
- Supply Ability: 1000 vehicle

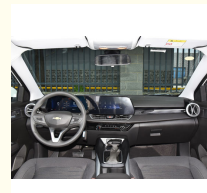
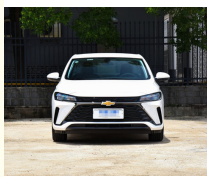
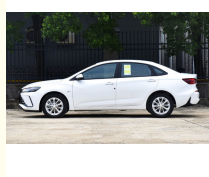


Product Specification

- Engine Type: Diesel/Petrol/Electric
- Exterior Features: Alloy Wheels, Fog Lights, Etc.
- Fuel Efficiency: High
- Interior Features: Air Conditioning, Audio System, Etc.
- Maintenance Cost: Low
- Price Range: Medium
- Reliability: High
- Seating Capacity: 5 Passengers
- Transmission Type: Automatic/Manual
- Vehicle Type: Minibus
- Highlight: Gasoline Chevrolet 5 Seater, Gasoline Chevrolet Minibus Vehicle, Minibus Vehicle 4x2



More Images



Product Description

Chevrolet gasoline 5-passenger two-wheel drive automatic passenger car 4x2

A sedan, also known as a compact car or a saloon car, is a type of passenger vehicle that typically features a closed body with separate compartments for the engine, passenger seating, and cargo space. Sedans are designed to comfortably accommodate a small number of passengers and offer a balance of fuel efficiency, practicality, and versatility.

The exterior design of a sedan can vary depending on the make and model, but it generally features a sleek and streamlined profile. Sedans often have four doors, providing easy access to both the front and rear seating areas. They may also have a trunk at the rear for storing luggage and other cargo.

Inside the sedan, there is typically seating for four to five passengers, including the driver. The seats are designed to provide comfort and support, with options for adjusting the positioning to suit individual preferences. Sedans often prioritize passenger comfort and offer ample legroom and headroom for front and rear occupants.

Sedans are equipped with various features and technologies to enhance the driving experience. This can include options such as air conditioning or climate control systems, infotainment systems with touchscreen displays, Bluetooth connectivity for hands-free calling and audio streaming, and advanced driver assistance systems like lane departure warning or automatic emergency braking.

In terms of powertrain, sedans typically offer a range of options. This can include gasoline engines, diesel engines, or hybrid powertrains, depending on the make and model. Gasoline engines are the most common, offering a balance of performance and fuel efficiency. Diesel engines provide higher torque and better fuel economy. Hybrid sedans combine an internal combustion engine with an electric motor to improve fuel efficiency and reduce emissions.

Vehicle technical parameters		
1	Car body dimensions (length × width × height) mm:	4656×1798×1465

2	engine manufacturer	SAIC General Motors Co., Ltd.
3	Wheelbase mm:	2640
4	Vehicle fully loaded total mass kg:	1710
5	Vehicle curb weight kg:	1260
6	suspension system	Front suspension MacPherson independent suspension,
7	Approach / departure angle	Multi-link independent suspension
8	Front overhang/rear overhang mm	13/14
9	Axle load	1014/1027(mm)
10	Number of axes	1189/1191
11	Fuel consumption	2
12	Number of spring leaves	5.3
13	Number of tires	---
14	Front wheelbase/rear wheelbase	4
15	Steering Type	1538/1541
16	Minimum ground clearance mm:	steering wheel
17	Minimum turning radius m:	147
18	Fuel type:	5.45
19	Fuel tank volume (L):	gasoline
20	engine model	44
21	Way of working:	L2B
22	Exhaust volume ml:	L in-line, four-cylinder, direct injection, 16 valves
23	Rated power kw(hp)/rpm:	1485
24	Maximum torque Nm/rpm:	83
25	Emission Standards:	141/1500-2500
26	Drive mode	National VI
26	transmission:	Front wheel drive
28	Top speed km/h:	6-speed automatic
29	Tire specifications and models	150.
30	Braking System	205/55R16
31	Environmental protection standards	front disk rear disk
32	Rated passenger capacity (including driver)	GB17691-2005 (National VI)

Main vehicle configuration

33	All-metal enclosed load-bearing body,
34	ABS/EBD/EBC, EBA/EBS/BA, ASR/TCS/TRC, ESC/ESP/DSC
35	Electric rearview mirror
36	Halogen/LED headlights
37	skylight
38	automatic air conditioner
39	central locking
40	Imitation leather seats
41	All-car aluminum alloy wheels, non-full-size spare tire
42	Front electric doors and windows
43	Driver's seat (main and auxiliary) airbags, front side airbags,
44	remote key
45	Original cab heating and cooling system
46	Tire pressure display
47	Body metallic paint
48	high mount brake light
49	Cab multifunctional storage box
50	Full car seat belt
51	Adjustable seat back
52	visual image
53	cruise control
54	Simple backup tool







+8613568891631 609965408@qq.com vehicle-automobile.com

No. 15, Wuxing 4th Road, Wuhou District, Chengdu City